

BALI FROM BEYOND

Pameran Bersama Seniman Ekspatriat
27 Maret - 10 April 2010



Pieter Deiman, 120x145.5cm, 2008



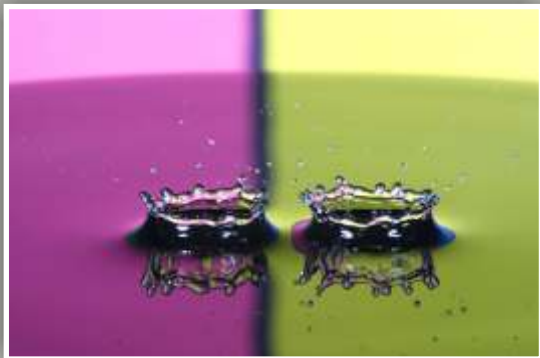
Emilie, Shape Shifters, Digital print on Canvas, 2009



Piet Nuyttens, Coffee Break, 70 x 90 cm, Oil On Canvas.



Paul Moran, Sleeping Nude, Water Clr, 58 x 42 cm.



Stephan Max Reinhold, Princes, Digital print on Canvas



Anja Zwanenburg, Rice paddies and banana trees, 90 x 90 cm, Digital Photo Art on Canvas, 2009



Razcel Jan, malkootha # 2

- (Belanda) Arie Smitt, Han Snel, Rudolf Bonnet,
Pieter Deiman, Tineke Vermeer,
Anja Zwanenburg.
(Inggris) Bruce Sherratt, Paul Moran.
(Prancis) Shant F. Clergue, Emilie Pauline Sermet,
Patrick Okorokoff.
(Filipina) Razcel Jan LS.
(Norwegia) Margareta.
(Belgia) Nuyttens Piet.
(Kanada) Stephan Max Reinhold.
(Swis) Marc Jurt.

Dalam kancah senirupa nasional maupun internasional, Bali tak diragukan lagi, adalah tempat yang melahirkan begitu banyak seniman baik yang terlahir karena bakat keturunan, pengaruh lingkungan dan juga melalui jalur pendidikan formal. Keindahan alam, keunikan tradisi dan kekuatan spiritual Bali telah menjadi inspirasi bagi seniman untuk berkarya, baik dalam ranah kesenian tradisional maupun modern kontemporer yang menjadi trend dunia era sekarang. Setelah era kedatangan Arie Smith, Han Snel, R. Bonnet dan lainnya, Bali hingga sekarang masih menjadi inspirasi bagi seniman asing lainnya yang kemudian datang dan berkreatifitas di Bali.

Untuk itu, Hanna Artspace dalam gelaran kali ini menampilkan ekspresi dari seniman expatriate tentang dan selama mereka tinggal di Bali yang dikemas dalam pameran bertajuk "Bali from Beyond". Disamping untuk menyuguhkan karya yang layak untuk dikoleksi oleh kolektor dan kalangan pecinta seni, pameran ini sekaligus diharapkan bisa menjadi barometer baru bagi dunia kesenian nasional untuk menghasilkan karya karya yang diterima dunia internasional.



Hanna Artspace Jl. Raya Pengosekan, Ubud - Bali.

Ph. +62361 978216, e: hannaartspace@yahoo.co.id, www.hannaartspace.com

BALI FROM BEYOND

Group Exhibition by Expat - Artists
27 March - 10 April 2010

(Holland) Arie Smitt, Han Snel, Rudolf Bonnet, Pieter Deiman, Tineke Vermeer, Anja Zwanenburg.
(U.K) Bruce Sherratt, Paul Moran.
(France) Shant F. Clergue, Emilie Pauline Sermet, Patrick Okorokoff.
(Philipine) Razcel Jan L.S. (Norway) Margareta. (Belgium) Nuytens Piet.
(Canada) Stephan Max Reinhold. (Switzerland) Marc Jurt.



Shant F. Clergue, Circle of Invisibility, 100 x 90cm, Acrylic on canvas



Marck Jurt, Offering #22, Mix Media on wood, 71x100cm, 1997



Rudolf Bonnet, 35x48cm, ink on paper, 1965



Arie Smitt, The Old Temple, The Old Trees, 50 x 60 cm, Acrylic On Canvas, 2010

Bali In the world of national and international fine art, undoubtedly, is a place that has been bearing so many artists who were born, either, because of the descended talent, environmental impact and also through formal education. Bali's beautiful scenery, unique traditions and its spiritual power has inspired artists to work, both in the realm of traditional and modern contemporary art, which is today become world trend. After the era of Arie Smitt, Han Snel, R. Bonnet and others, Bali until now is still an inspiration for other foreign artists who later came, reside and create art in Bali.

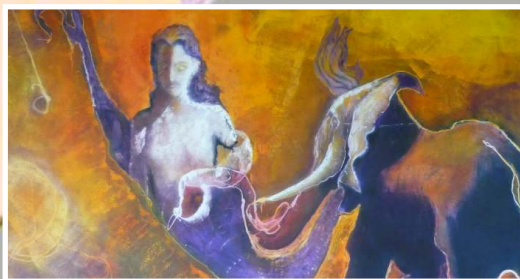


Margareta, Untitled, 110 x 135 cm, Acrylic, glue & sand on canvas, 2010

Due to, Hanna Artspace in this event will visualize the expression of the expatriate artists of and during their stay in Bali, packed in the exhibition entitled "Bali from Beyond". In addition to present the work that is suitable for collection by the collectors and art lovers, this exhibition is expected will bring new barometer for the national art to produce works with international qualities.



Tineke Vermeer, Waiting for, 22 x 16 x 10cm, bronze, 2010.



Bruce Sherratt, The Elephant And The Mermaid, 250 x 150 cm.



Han Snel, Siti, 85x43cm, oil on canvas, 1972



Patrick Okorokoff, Canang # 2, 90x120cm, Acrylic on Canvas, 2009

Proudly sponsored by

PKF
Accountants &
Business Advisers